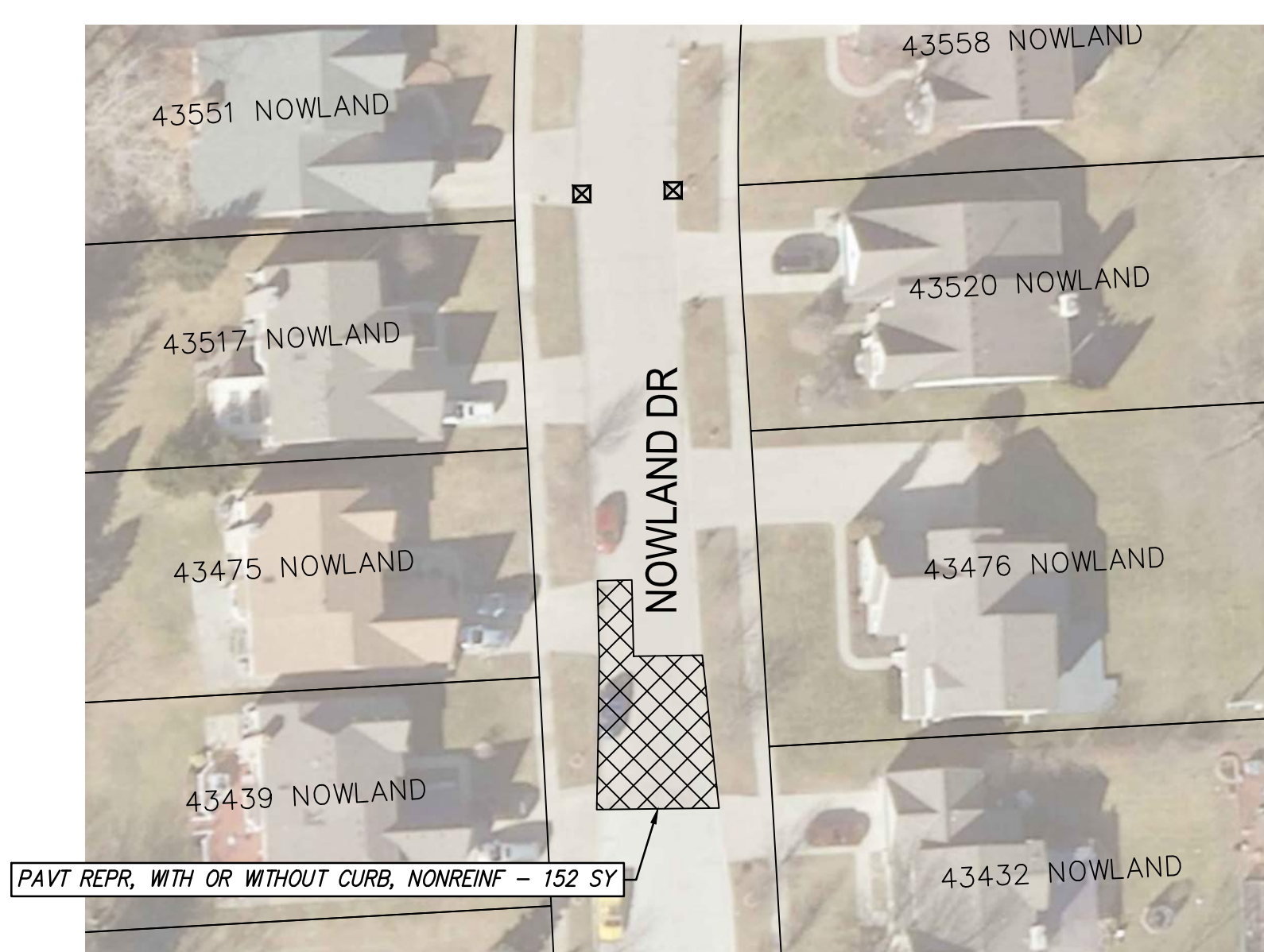
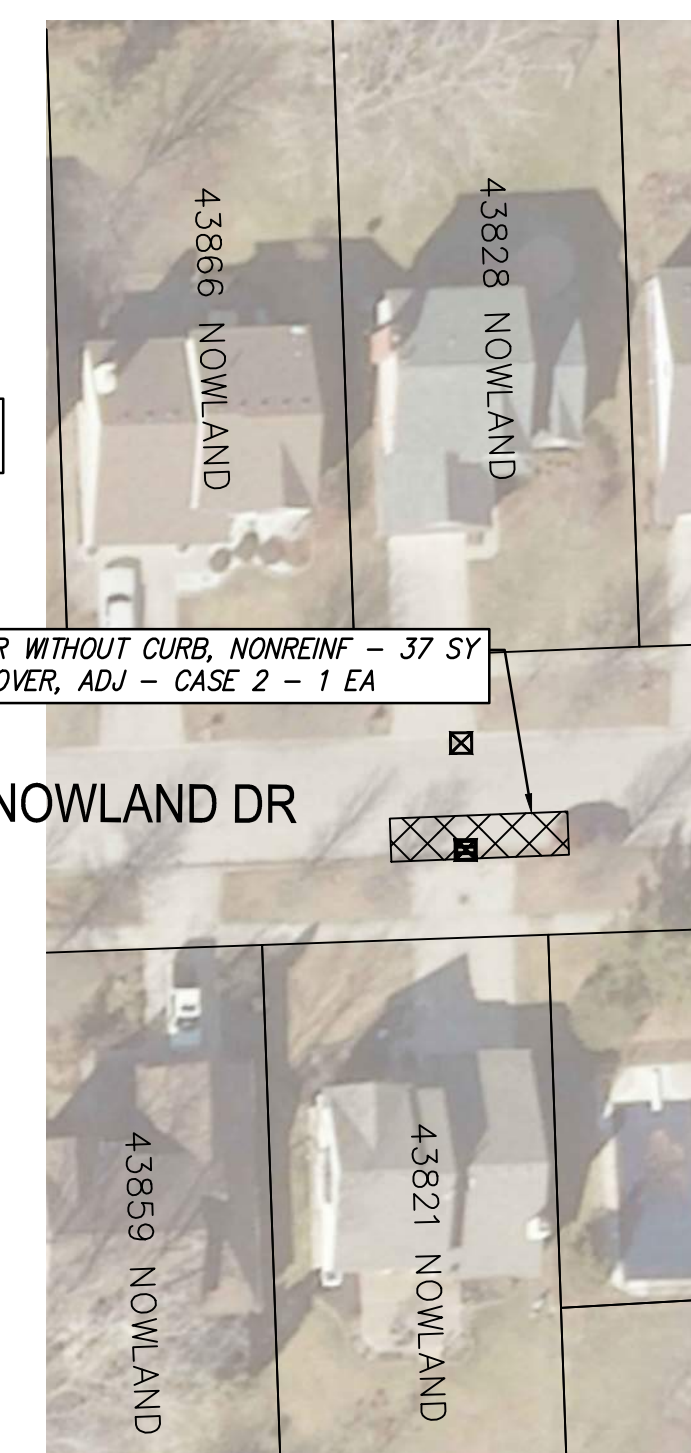
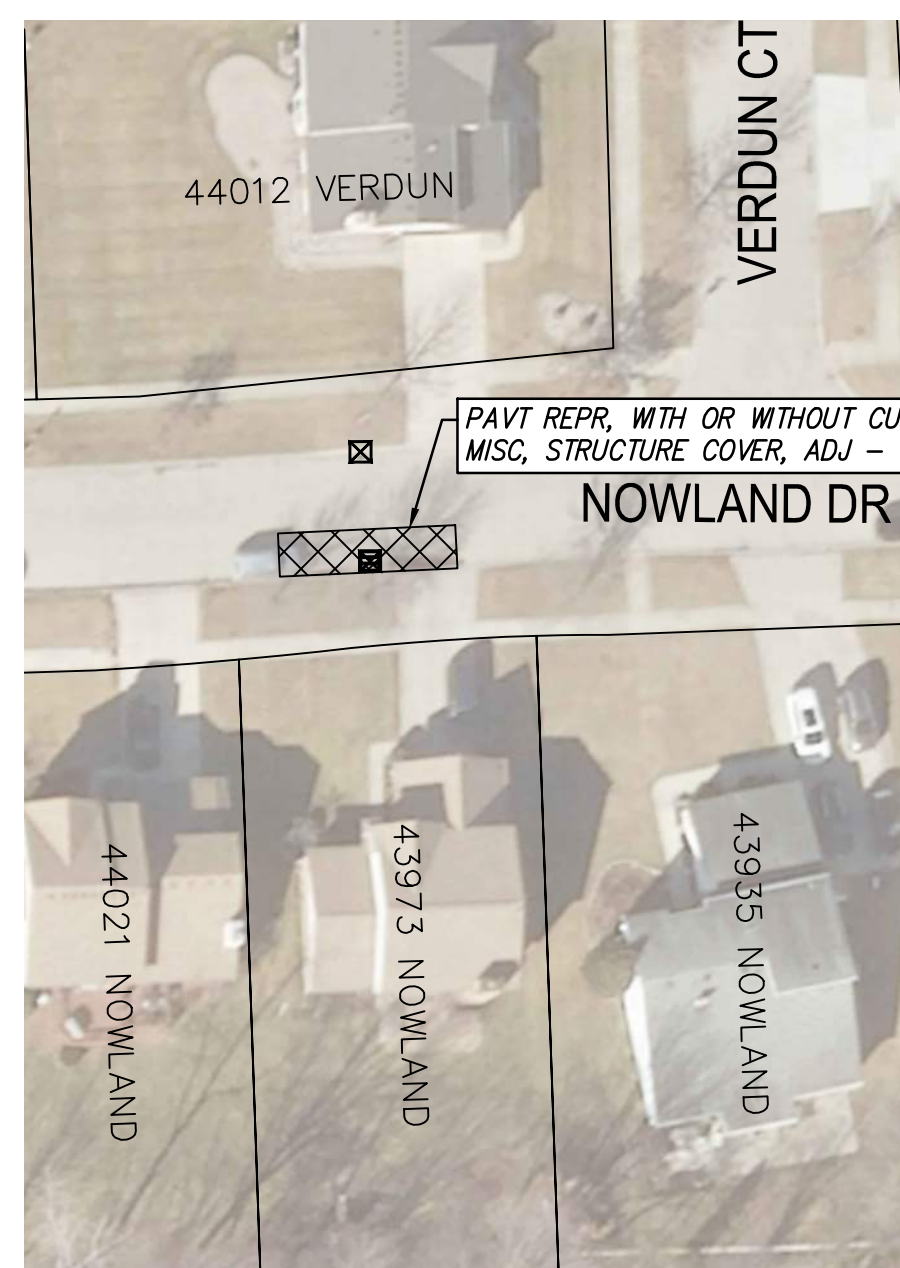
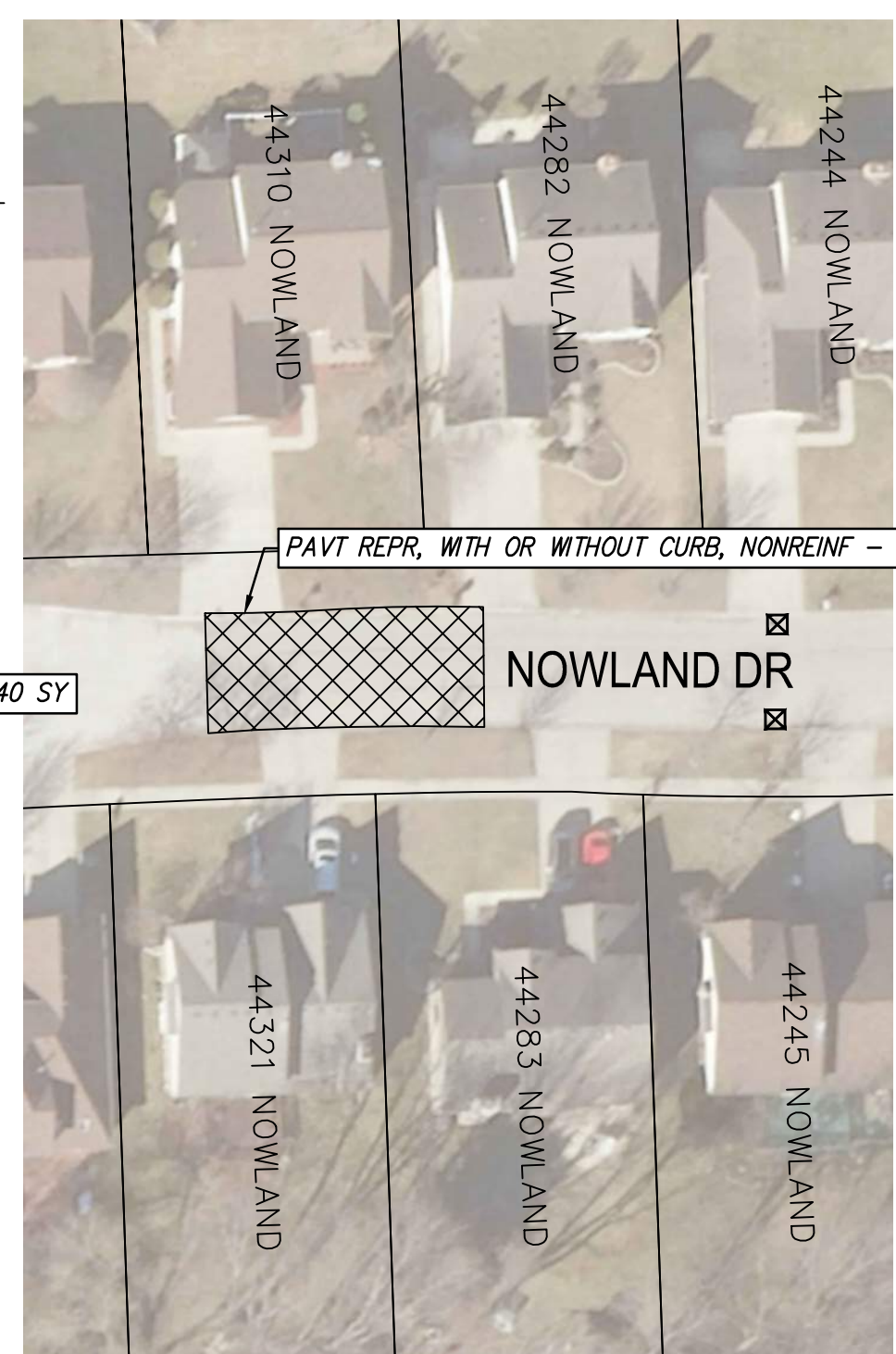
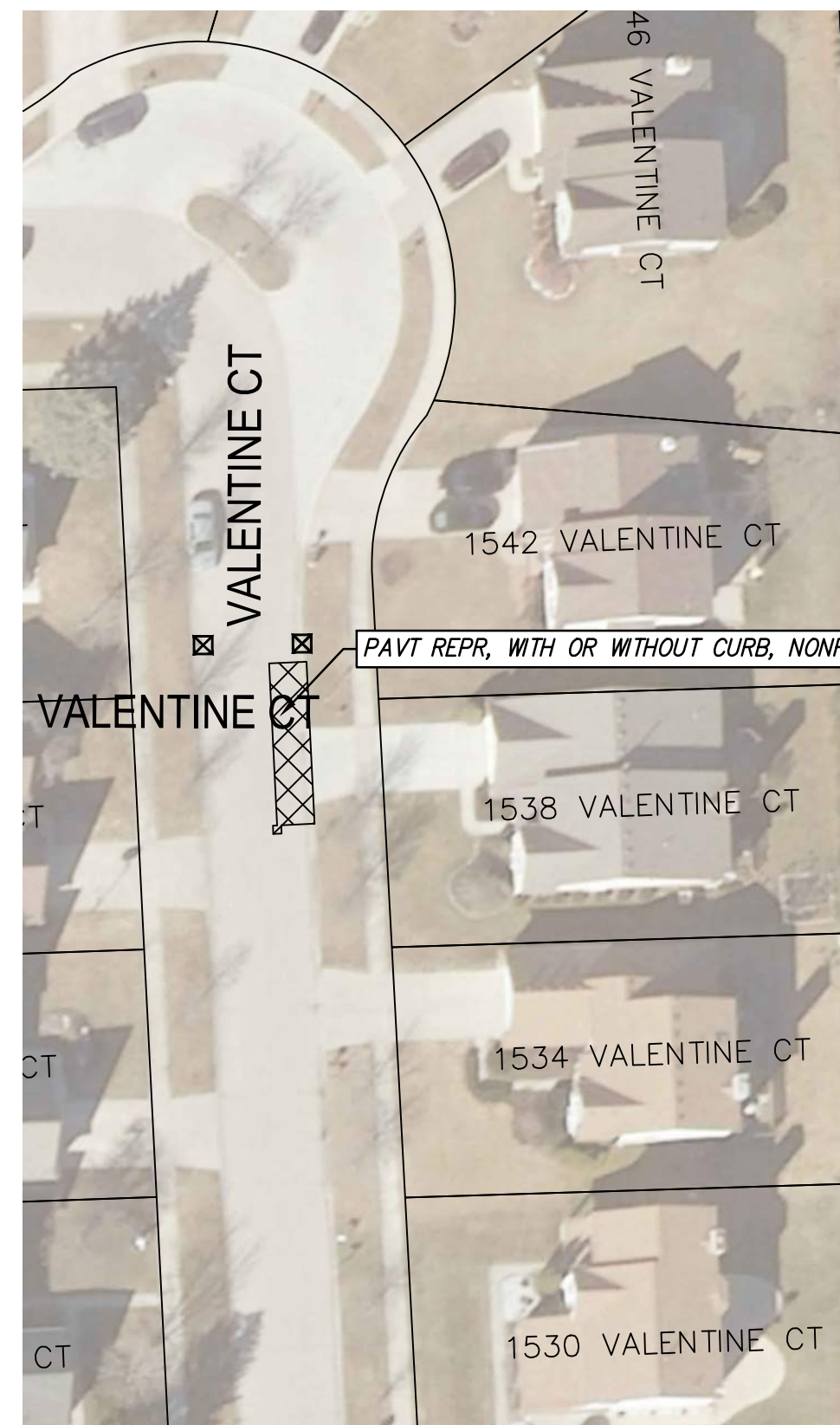
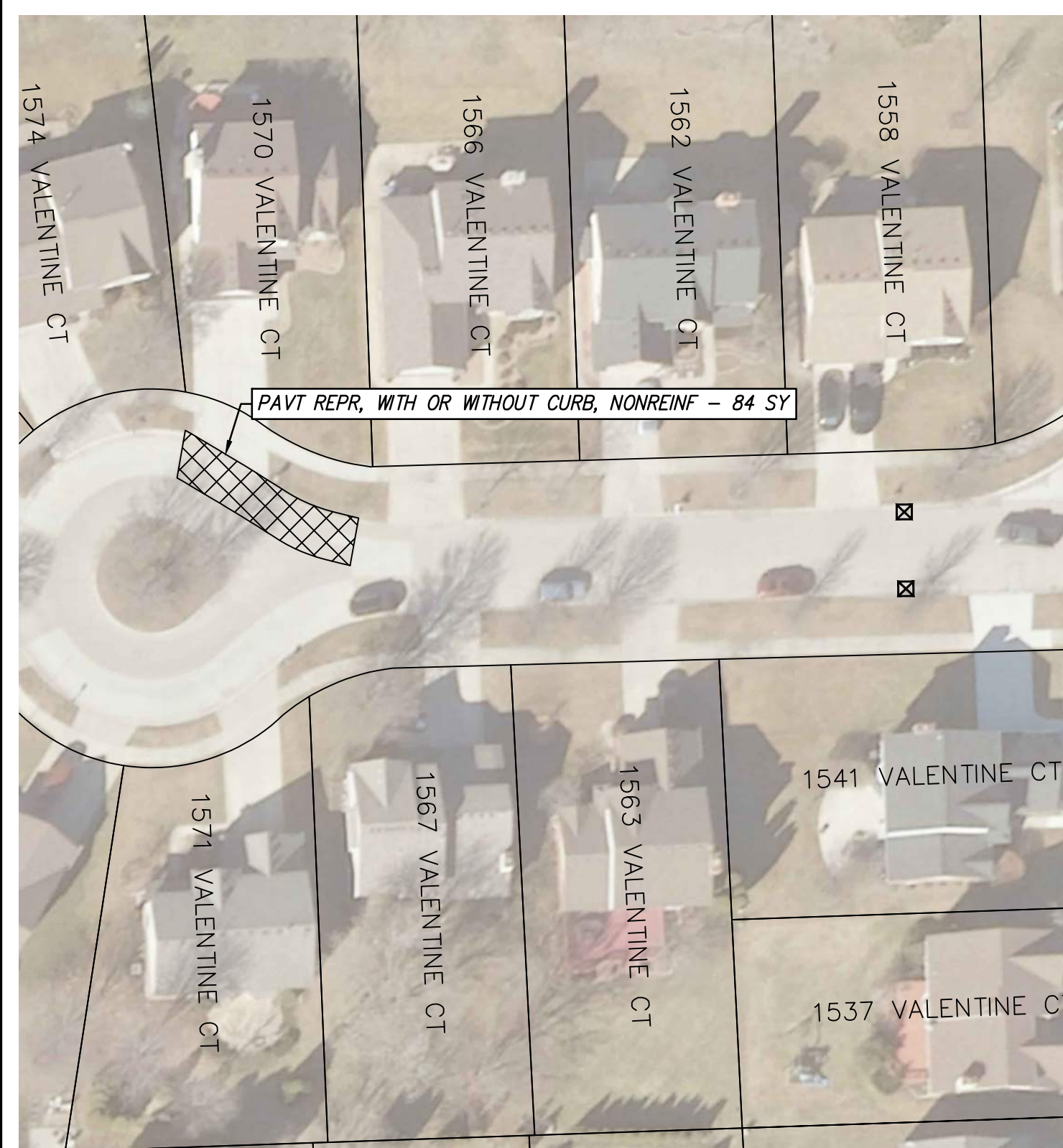


NOWLAND ESTATES



NOTES:
 EMBANKMENT, EXCAVATION, RESTORATION, TEMPORARY TRAFFIC CONTROL DEVICES, AND MOBILIZATION ARE INCIDENTAL TO ITEMS DEPICTED IN THE PLAN SHEET AND SHALL NOT BE PAID SEPARATELY.
 THE SCOPE PROVIDED IN THIS PLAN IS PRELIMINARY, BASED ON ACTUAL UNIT PRICING DETERMINED FROM THE BIDDING PROCESS. SCOPE COULD BE ADDED OR SUBTRACTED BASED ON EACH SUBDIVISION'S REPAIR BUDGET. CONTRACTOR TO COORDINATE WITH TOWNSHIP INSPECTOR.
 CONTRACTOR TO ENSURE POSITIVE DRAINAGE TO STRUCTURES WITHIN PATCHES.

LEGEND

PAVT REPR, WITH OR WITHOUT CURB, NONREINF

SOIL EROSION CONTROL DEVICES

INLET FILTER/SILT SACK

QUANTITIES - THIS SHEET

Item	Quantity	Unit
Erosion Control, Inlet Protection, Fabric Drop	14	Ea
Misc Structure Cover, Adj - Case 2	3	Ea
Pavt Repr, With or Without Curb, Nonreinf	596	Syd

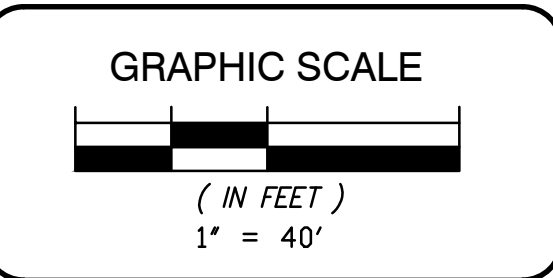
SPALDING DeDECKER
 Engineering and Surveying
 Excellence Since 1954

905 South Blvd. East
 Rochester Hills, MI 48307
 Phone: (248) 844-5400
 Fax: (248) 844-5404

15 E. Baltimore Ave, Suite A
 Detroit, MI 48202
 Phone: (313) 309-7051
 Fax: (313) 309-7101

27333 Meadowbrook Rd., Suite 210
 Novi, MI 48377
 Phone: (248) 844-6274

400 Ann St. NW Suite 204
 Grand Rapids, MI 49504
 Phone: (616) 885-5802
 www.sda-eng.com
 (800) 598-1600



811
 Know what's below.
 Call before you dig.

UTILITY NOTE
 PRIOR TO CONSTRUCTION, ALL LOCATIONS AND DEPTHS OF EXISTING UTILITIES (IN CONFLICT WITH PROPOSED IMPROVEMENTS) SHALL BE VERIFIED IN THE FIELD. CALL MISS DIG 3 WORKING DAYS PRIOR TO CONSTRUCTION.

UTILITY INFORMATION ON THIS DRAWING MAY BE FROM INFORMATION DISCLOSED TO THIS FIRM BY THE VARIOUS UTILITY COMPANIES, CITY/COUNTY AGENCIES AND OTHER VARIOUS SOURCES. UNDERGROUND UTILITIES WHICH ARE ON PRIVATE PROPERTY ARE USUALLY NOT DELINEATED UPON A UTILITY COMPANY'S PUBLISHED PLANS. THEIR LOCATION, IF SHOWN UPON THIS SURVEY, ARE APPROXIMATED FROM FOUND PAINT MARKS/STAKES, ETC. AS LOCATED BY THIS FIRM FROM SOURCES WHICH ARE UNKNOWN. NO GUARANTEE IS GIVEN AS TO THE COMPLETENESS OR ACCURACY THEREOF.
 COPYRIGHT © 2022 SPALDING DeDECKER ASSOCIATES, INC. THIS DRAWING AND THE SUBJECT MATTER CONTAINED THEREON IS PROPRIETARY AND IS NOT TO BE USED OR REPRODUCED WITHOUT WRITTEN PERMISSION OF SPALDING DeDECKER ASSOCIATES, INC.

2023 CANTON MINOR ROADS PROGRAM

NOWLAND ESTATES - LAYOUT PLAN

SECTION TOWN RANGE
 CITY/TOWNSHIP CANTON TOWNSHIP
 COUNTY WAYNE

NO.	DATE	SUBMITTAL
1	2-2-23	TOWNSHIP REVIEW
2	2-2-23	WCPS PERMIT APPLICATION
3	2-9-23	ISSUED FOR BID
4	3-29-23	POST BID REVISIONS

VERIFY SCALES
 BAR IS ONE INCH ON ORIGINAL DRAWING
 IF NOT ONE INCH ON THIS SHEET,
 ADJUST SCALES ACCORDINGLY

DATE	DATE
DRAYER A. MEUX	1-12-23
DESIGNER A. MEUX	1-12-23
CHECKED BY P. STRUNK	1-31-23
PROJECT MANAGER P. STRUNK	BID PLAN DATE 2-9-23
DEPARTMENT MANAGER APPROVAL	DATE

JOB NO.	DRAWING NO.
CA22003	CA22003NOWLAND
SCALE:	SHEET NO.
1" = 40'	26 OF 42